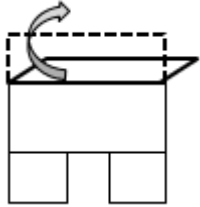
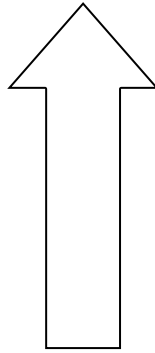


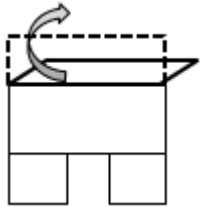
# Requirement

1 x RFID tag each required to be stuck facing outwards on inside of **both** passenger & driver side windows.



## Step 1

Fold along dotted line in this direction



## Step 3

From inside the cab wind window down slightly and place the fold from Step 1 over the top left (for passenger side) or top right (for drivers side) corner of the window—as per images below—so these instructions are still facing you.



## Step 4

Peel off backing from tag for vehicle and stick as shown (Fig 1) to window in space created from Step 2 below.

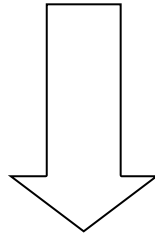
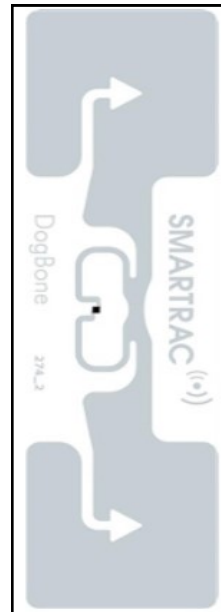
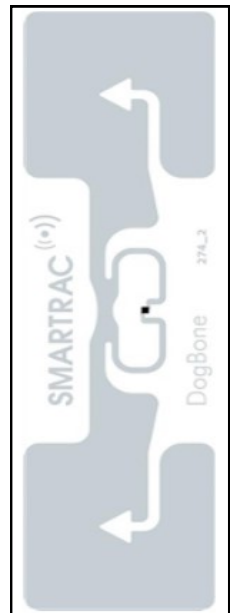


Fig 1.

Passenger side



Driver side



## Step 5

Repeat Steps 3 & 4 on opposite window



## Step 2

PLEASE CUT THIS SECTION OUT



## Once complete

